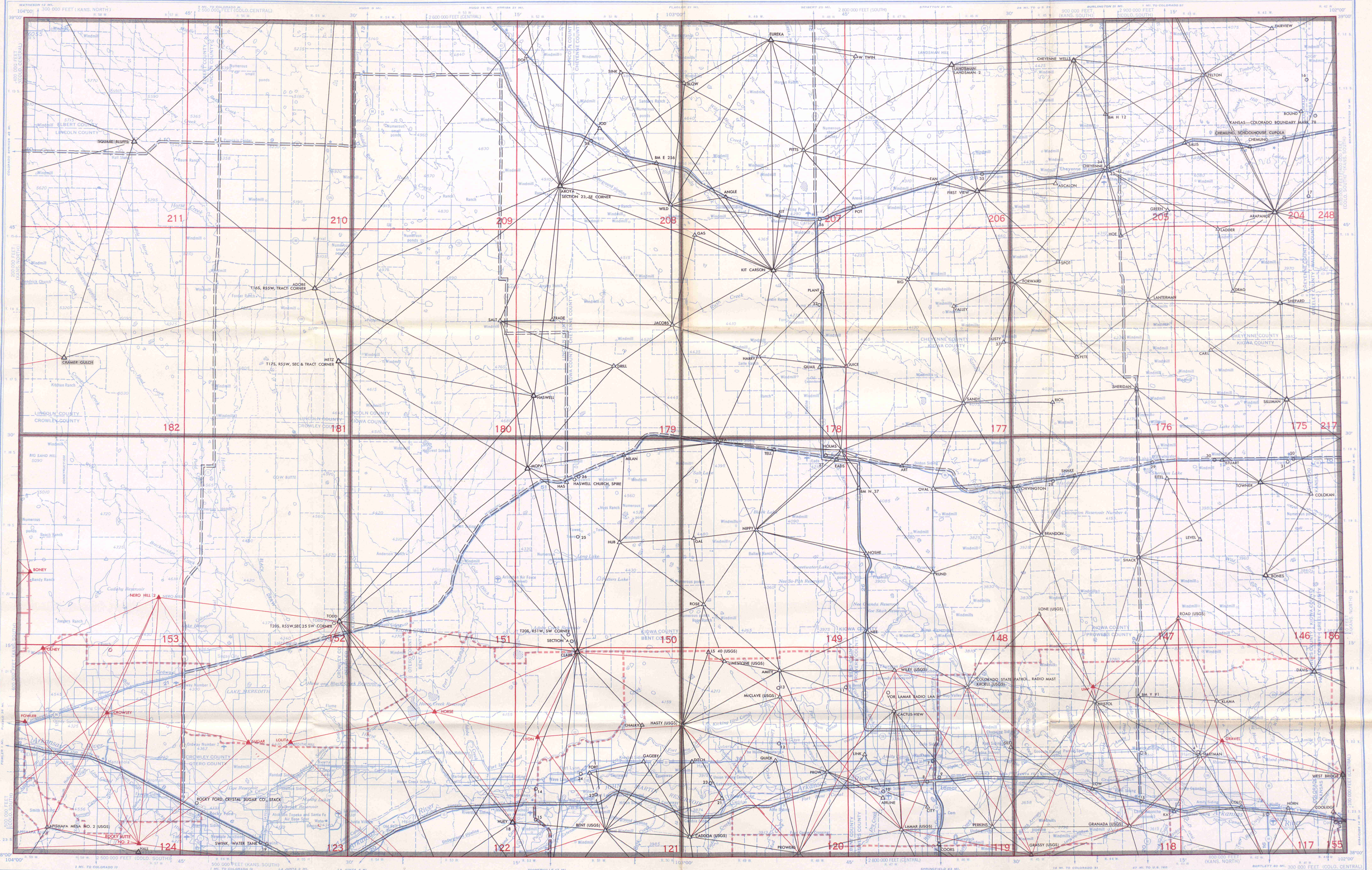
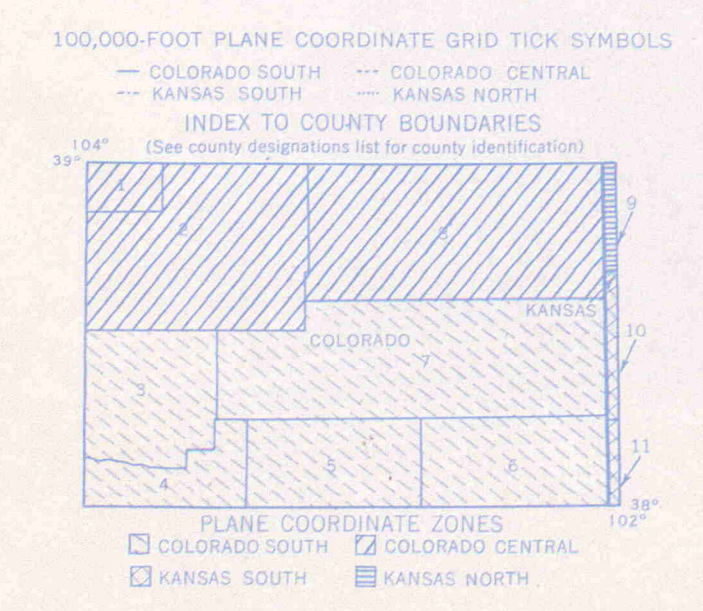


GEODETIC CONTROL DIAGRAM



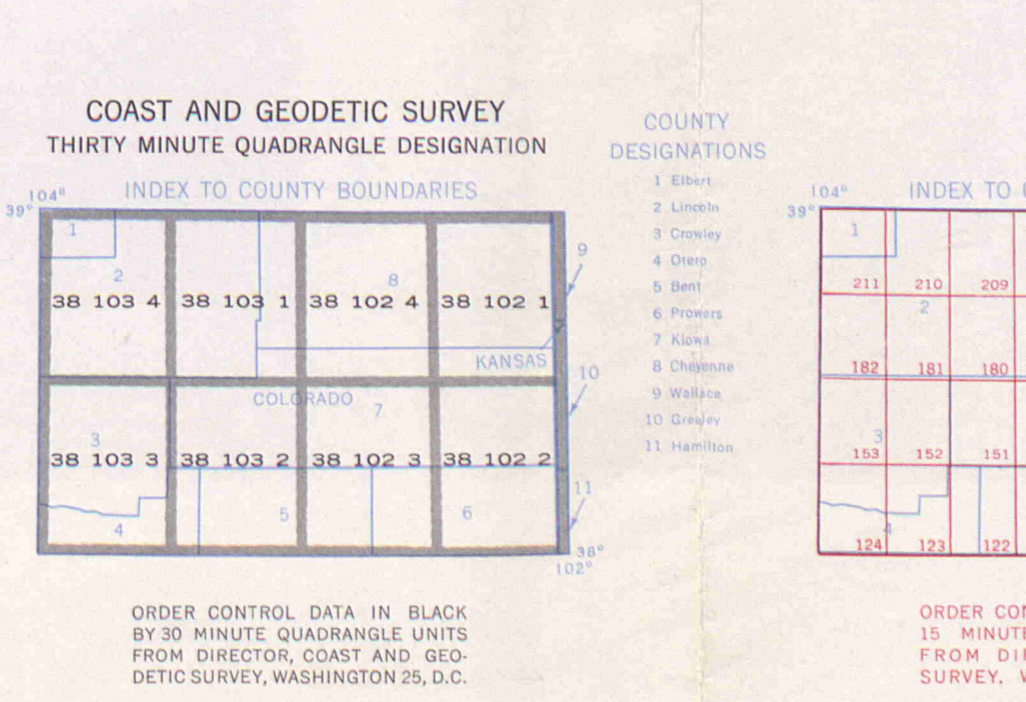
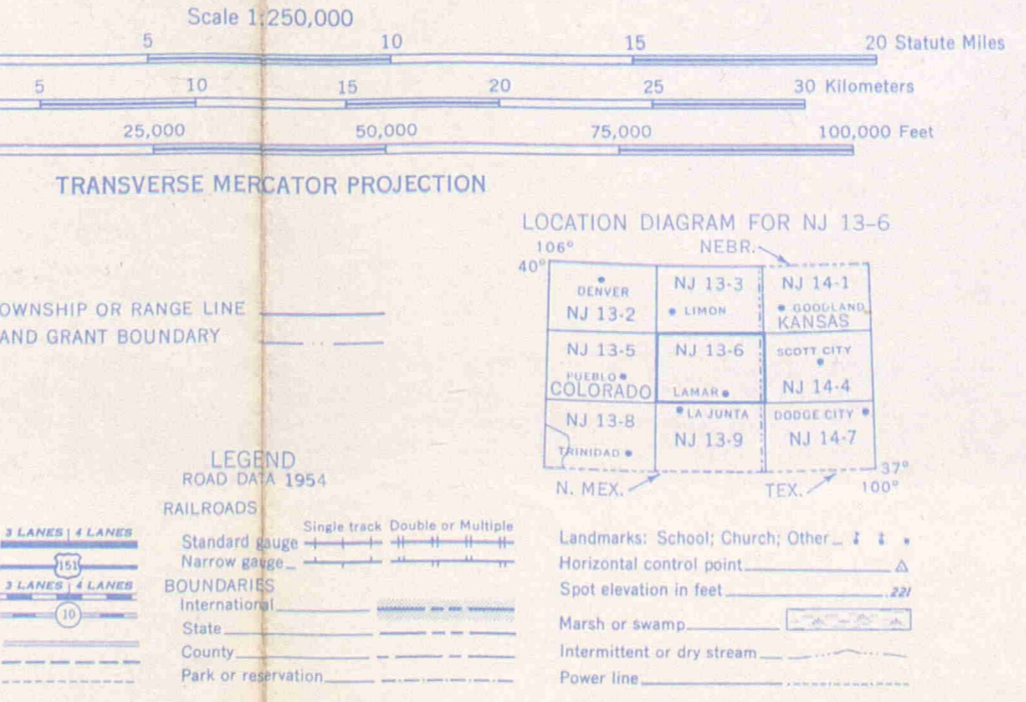
LAMAR, COLORADO, KANSAS (NJ 13-6)  
APRIL 1960

Base prepared by the Army Map Service (BET), Corps of Engineers, U. S. Army, Washington, D. C. Compiled in 1955 by photogrammetric methods and from United States Quadrangles, 1:24,000, 1895-5, 1903-5. Planimetric detail revised by photo-planimetric methods. Horizontal and vertical control by USGS, USCGS, and CE. Photographic field annotated in 1954.



- | Coast & Geodetic Survey  | Geological Survey  |
|--|--|
| <ul style="list-style-type: none"> <li>▲ Monumented Point - First Order</li> <li>△ Monumented Point - Second Order</li> <li>▲ Monumented Point - Third Order</li> <li>○ Located Object - Third Order</li> <li>See separate index for names of numbered stations</li> <li>Station reported not recovered</li> <li>Measured Base - Electronic or Taped</li> <li>Line of triangulation observed from one end only</li> <li>Line of triangulation observed from both ends</li> <li>Measured Length - Electronic or Taped</li> <li>Theodolite Traverse - Electronic Distances</li> <li>Transit Traverse - Taped Distance Third Order</li> <li>Transit Traverse and Levelling Third Order</li> </ul> | <ul style="list-style-type: none"> <li>— First Order</li> <li>— Second Order</li> <li>— Third Order</li> </ul> |
- STATE SURVEY CONTROL
- Horizontal or Vertical

- HORIZONTAL CONTROL
- VERTICAL CONTROL
- Scale 1:250,000
- 25,000 50,000 75,000 100,000 Feet
- SECTIONIZED TOWNSHIP
- |    |    |    |    |    |    |
|----|----|----|----|----|----|
| 6  | 5  | 4  | 3  | 2  | 1  |
| 7  | 8  | 9  | 10 | 11 | 12 |
| 13 | 14 | 15 | 16 | 17 | 18 |
| 19 | 20 | 21 | 22 | 23 | 24 |
| 25 | 26 | 27 | 28 | 29 | 30 |
| 31 | 32 | 33 | 34 | 35 | 36 |
- TOWNSHIP OR RANGE LINE  
LAND GRANT BOUNDARY
- LEGEND
- ROADS
- Hard surface, heavy duty
  - More than two lanes wide
  - Two lanes wide, Federal route marker
  - Hard surface, medium duty
  - More than two lanes wide
  - Two lanes wide, State route marker
  - Improved light duty
  - Improved light duty
  - Trail
- RAILROADS
- Single track
  - Double or Multiple track
  - Standard gauge
  - Narrow gauge
- BOUNDARIES
- International
  - State
  - County
  - Park or reservation
- LANDMARKS: School, Church, Other, etc.
- Spot elevation in feet
  - Marsh or swamp
  - Intermittent or dry stream
  - Power line



- COUNTY DESIGNATIONS
- 1. Bent
  - 2. Cheyenne
  - 3. Crowley
  - 4. DeWitt
  - 5. Grant
  - 6. Hamilton
  - 7. Kiowa
  - 8. Lincoln
  - 9. Logan
  - 10. Morton
  - 11. Sherman
- INDEX TO COUNTY BOUNDARIES
- |     |     |     |     |     |     |     |     |
|-----|-----|-----|-----|-----|-----|-----|-----|
| 157 | 158 | 159 | 160 | 161 | 162 | 163 | 164 |
| 137 | 138 | 139 | 140 | 141 | 142 | 143 | 144 |
| 117 | 118 | 119 | 120 | 121 | 122 | 123 | 124 |
| 97  | 98  | 99  | 100 | 101 | 102 | 103 | 104 |
| 77  | 78  | 79  | 80  | 81  | 82  | 83  | 84  |
| 57  | 58  | 59  | 60  | 61  | 62  | 63  | 64  |
| 37  | 38  | 39  | 40  | 41  | 42  | 43  | 44  |
| 17  | 18  | 19  | 20  | 21  | 22  | 23  | 24  |
| 1   | 2   | 3   | 4   | 5   | 6   | 7   | 8   |
- LAMAR, COLORADO, KANSAS (NJ 13-6)  
APRIL 1960

INDEX TO  
 NUMBERED HORIZONTAL CONTROL STATIONS  
 by the  
 Coast and Geodetic Survey

QUAD 381021-3-4-5 & 381031-2-3-4  
 COLO  
 LATITUDE 38°00' TO 39°00'  
 LONGITUDE 102°00' TO 104°00'  
 DIAGRAM NJ 13-6, LAMAR

KEY NO.	STATION NAME	QUAD NO.	STATION NO.
1.	COOLIDGE, SULLIVAN BROTHERS INC., GRAIN ELEVATOR		
2.	COOLIDGE, SOUTH EASTERN COLORADO CO-OP., GRAIN ELEVATOR		
3.	HOLLY, WHITE CONCRETE, STACK HOLLY, MUNICIPAL WATER TANK, FINIAL HOLLY, HOLLY ELEVATOR CO. GRAIN ELEVATOR HOLLY, SOUTH EASTERN COLORADO CO-OP., GRAIN ELEVATOR		
4.	HARTMAN, MUNICIPAL WATER TANK HARTMAN, DES MARTEAU COMMISSION CO., GRAIN ELEVATOR		
5.	GRANADA DES MARTEAU COMMISSION CO., GRAIN ELEVATOR GRANADA, MUNICIPAL WATER TANK		
6.	BRISTOL, DES MARTEAU COMMISSION CO., GRAIN ELEVATOR		
7.	LAMAR, RADIO STATION KLMR RADIO MAST		
8.	LAMAR, DES MARTEAU COMMISSION CO., GRAIN ELEVATOR		
9.	LAMAR CREAMERY, STACK		
10.	AIRPORT BEACON, LAMAR AIRPORT		
11.	BIG END, LAMAR FLOUR MILLS, GRAIN ELEVATOR		
12.	McCLAVE, COLORADO MILLING CO., GRAIN ELEVATOR		
13.	McCLAVE (USGS) AZIMUTH MARK		
14.	LAS ANIMAS, MUNICIPAL WATER TANK		
15.	LAS ANIMAS CEMETERY, WATER TANK		
16.	KANSAS-COLORADO BOUNDARY MARK 73 1/2		
17.	KANSAS-COLORADO BOUNDARY MARK 83		
18.	SECTION CORNER, NEAR STATION HUEY		
19.	SWINK HOLLY SUGAR CORP., STACK		
20.	TOWNER, GANO GRAIN CO., GRAIN ELEVATOR		
21.	JIM DAM MID BASE (USE)		
22.	FORT LYON, VETERANS HOSPITAL, STACK FORT LYON, VETERANS HOSPITAL, WATER TANK		
23.	LAKEVIEW SCHOOL, SOUTH WATER TANK LAKEVIEW SCHOOL, NORTH WATER TANK		
24.	FORT LYON RAILROAD SIDING, LAMAR FLOUR MILL, GRAIN ELEVATOR		
25.	BUREAU OF STANDARDS, RADIO MAST		
26.	HASWELL, DES MARTEAU COMMISSION CO., GRAIN ELEVATOR		
27.	EADS, MUNICIPAL WATER TANK EADS, MUNICIPAL WATER STANDPIPE EADS, HART-BARTLETT-STURTEVANT, GRAIN ELEVATOR		
28.	BRANDON, TALLMAN GRAIN CO., GRAIN ELEVATOR		
29.	SHERIDAN LAKE, DES MARTEAU COMMISSION CO., GRAIN ELEVATOR		
30.	STUART RAILROAD SIDING, DES MARTEAU COMMISSION CO., GRAIN ELEVATOR		
31.	TOWNER, SCHOOL, STACK TOWNER, WOOLFOLK GRAIN CO., GRAIN ELEVATOR TOWNER, HART-BARTLETT-STURTEVANT, GRAIN ELEVATOR		
32.	COLORADO INTERSTATE GAS CO., KIT CARSON STATION, RADIO MAST COLORADO INTERSTATE GAS CO., KIT CARSON STATION, WATER TANK		
33.	CHEYENNE WELLS, HARMACK GRAIN CO., GRAIN ELEVATOR		
34.	CHEYENNE WELLS, CATHOLIC CHURCH, CROSS CHEYENNE WELLS, MUNICIPAL WATER TANK		
35.	FIRST VIEW SECTION HOUSE, CHIMNEY FIRST VIEW RAILROAD SIDING, THE DENVER ELEVATORS, GRAIN ELEVATOR		

KEY NO.	STATION NAME	QUAD NO.	STATION NO.
35.	FIRST VIEW SECTION HOUSE, CHIMNEY FIRST VIEW RAILROAD SIDING, THE DENVER ELEVATORS, GRAIN ELEVATOR		
36.	KIT CARSON, THE DENVER ELEVATORS, GRAIN ELEVATOR		
37.	T16 & 17S, R45 & 46W, SECS 1, 6, 31, 36		
38.	AROYA, SECTION HOUSE, CHIMNEY		