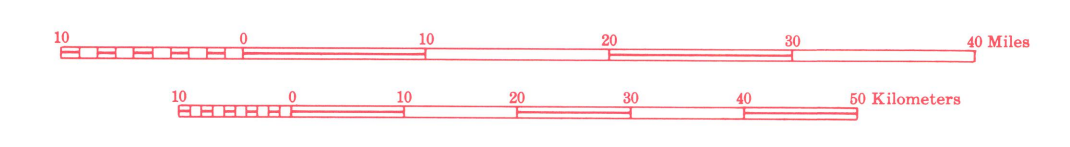


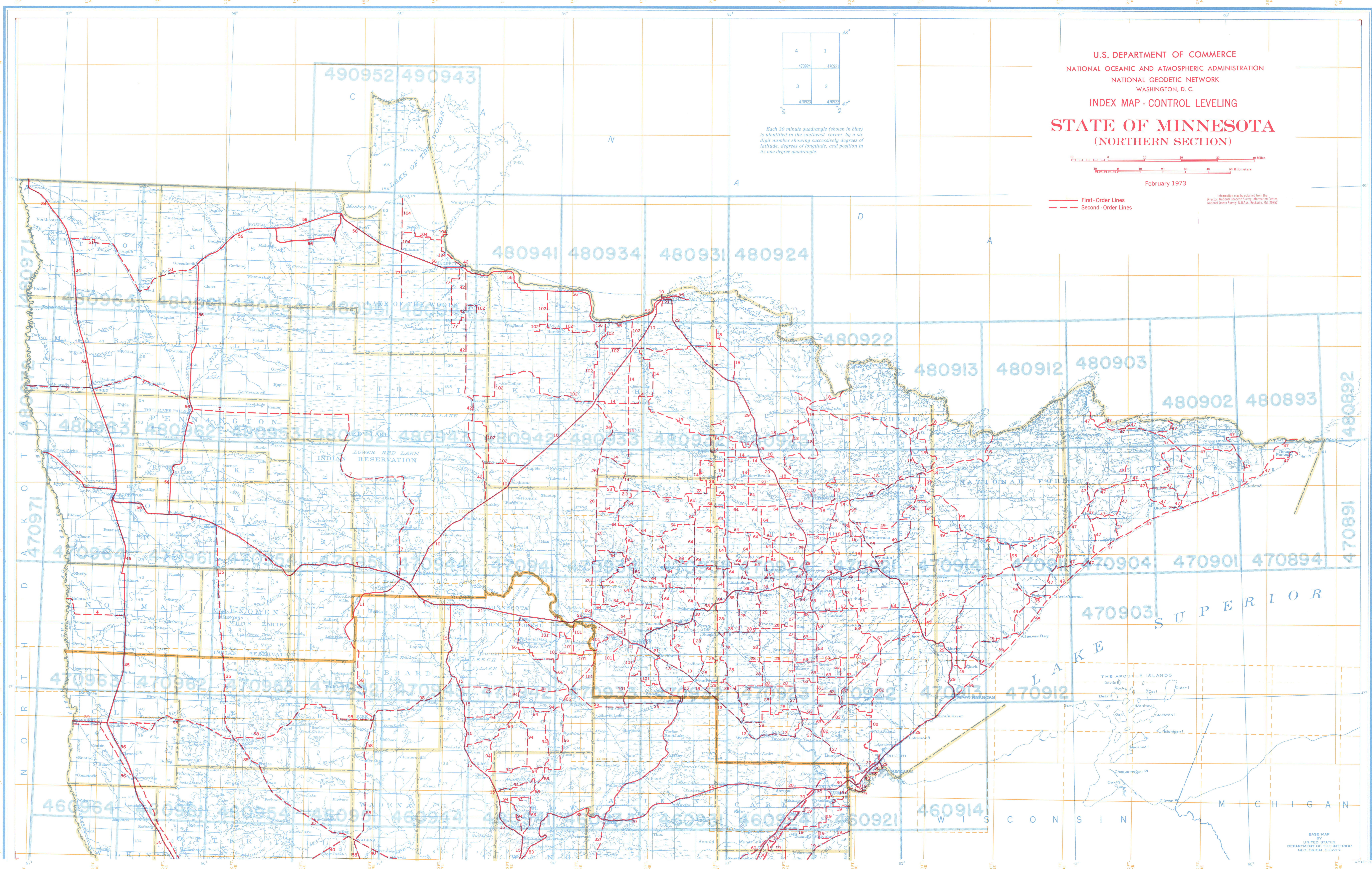
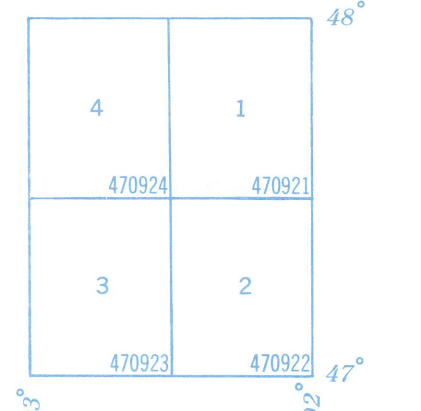
U.S. DEPARTMENT OF COMMERCE
 NATIONAL OCEANIC AND ATMOSPHERIC ADMINISTRATION
 NATIONAL GEODETIC NETWORK
 WASHINGTON, D. C.
 INDEX MAP - CONTROL LEVELING
STATE OF MINNESOTA
 (NORTHERN SECTION)



February 1973

— First-Order Lines
 - - - Second-Order Lines

Information may be obtained from the
 Director, National Geodetic Survey Information Center,
 National Ocean Survey, U.S.A.A., Rockville, Md. 20852



BASE MAP BY
 UNITED STATES
 DEPARTMENT OF THE INTERIOR
 GEOLOGICAL SURVEY