

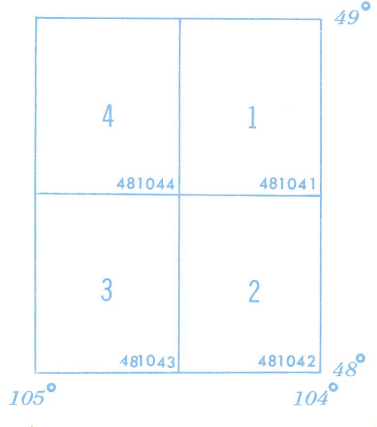
U.S. DEPARTMENT OF COMMERCE
 NATIONAL OCEANIC AND ATMOSPHERIC ADMINISTRATION
 NATIONAL GEODETIC NETWORK
 WASHINGTON, D. C.

INDEX MAP - CONTROL LEVELING
STATE OF MONTANA
 (EASTERN SECTION)

February 1973

Information may be obtained from the
 Director, National Geodetic Survey Information Center,
 National Ocean Survey, N.O.S.A., Rockville, Md. 20852

- First-Order Lines
- - - Second-Order Lines



Note: Data may be requested by quadrangle, county, or other unit. Since publication of data in quadrangle units may not be complete for this State, requests for information by quadrangle number will be supplied with data in whatever form is available.

Each 30 minute quadrangle (shown in blue) is identified to the southeast corner by a six digit number showing successively degrees of latitude, degrees of longitude, and position in its one degree quadrangle.

BASE MAP BY
 UNITED STATES
 DEPARTMENT OF THE INTERIOR
 GEOLOGICAL SURVEY