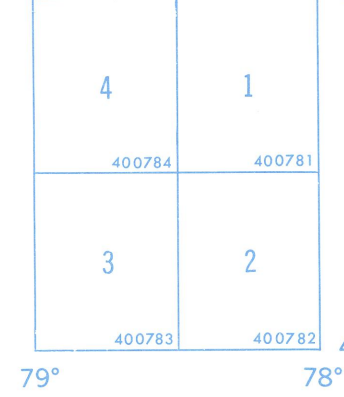


BASE MAP
BY
UNITED STATES
DEPARTMENT OF THE INTERIOR
GEOLOGICAL SURVEY



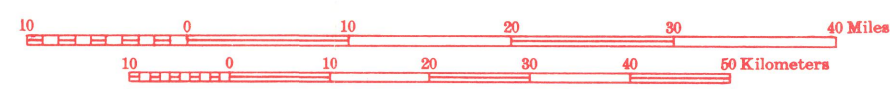
Data may be requested by quadrangle.
Publication of data in quadrangle units is complete for this State.

Information may be obtained from the
Director, National Geodetic Information Center,
National Ocean Survey, N.O.A.A., Rockville, Md. 20852

Each 30 minute quadrangle (shown in blue) is identified by a six digit number showing successively degrees of latitude, degrees of longitude, and position in its one degree quadrangle.

INDEX MAP - CONTROL LEVELING STATE OF PENNSYLVANIA

U.S. DEPARTMENT OF COMMERCE
NATIONAL OCEANIC AND ATMOSPHERIC ADMINISTRATION
NATIONAL OCEAN SURVEY
WASHINGTON, D. C.
July 1978



- First-Order Lines
- - - Second-Order Lines
- · · Third-Order Lines