

HORIZONTAL CONTROL

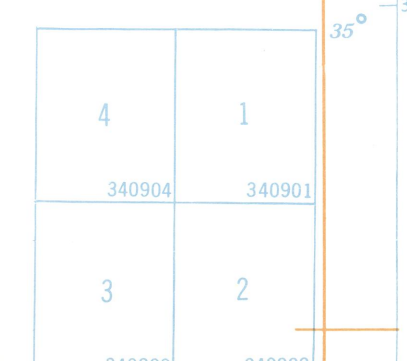
- Monumented Point or Located Object
- Station reported not recovered
- Measured Base, Electronic or Tapes
- Line of triangulation observed from one end only
- Measured Length, Electronic

Information may be obtained from the Coast and Geodetic Survey, Environmental Science Service Administration, Bethesda, Maryland 20803.

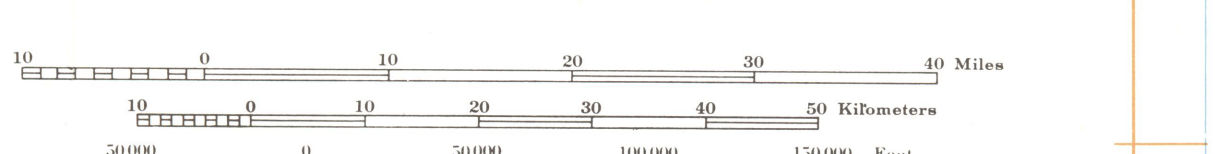
Additional triangulation and traverse along the Mississippi River will be found in the publications "Triangulation along the Mississippi River, Cairo to Bardonia to Memphis" and "Triangulation along the Mississippi River, Memphis to Vicksburg" by the Corps of Engineers, U. S. Army. Copies of these publications may be procured from Army Map Service, 6500 Brooks Lane, Washington, D. C.

Note: Data may be requested by quadrangle, county, or other unit. Since publication of data in quadrangle units may not be complete for this State, requests for information by quadrangle number will be supplied with data in whatever form is available.

Each 30 minute quadrangle (shown in blue) is identified in the southeast corner by a four digit number showing successively degrees of latitude, degrees of longitude, and position in its one degree quadrangle.



U.S. DEPARTMENT OF COMMERCE
 NATIONAL OCEANIC AND ATMOSPHERIC ADMINISTRATION
 NATIONAL GEODETIC NETWORK
 WASHINGTON, D. C.
 May 1972
TRIANGULATION DIAGRAM
STATE OF ARKANSAS



usgs