

Additional triangulation in this outlined area will be found on triangulation diagram 8094

NOAA WEATHER BROADCASTS  
This Notice Weather Service station listed below provides continuous marine weather broadcasts. The range of reception is variable, but for most stations is usually 20 to 40 miles from the antenna site.  
Ketchikan, Alaska WXL26 162.55 MHz

RADAR REFLECTORS  
Radar reflectors have been placed on many floating aids to navigation. Individual marine radio identification numbers on these aids have been omitted from this chart.

POLLUTION REPORTS  
Report all spills of oil and hazardous substances to the National Response Center at 800-424-9333 (24 hours) or to the nearest U.S. Coast Guard facility. If electronic communication is impossible (24 CFR 155).

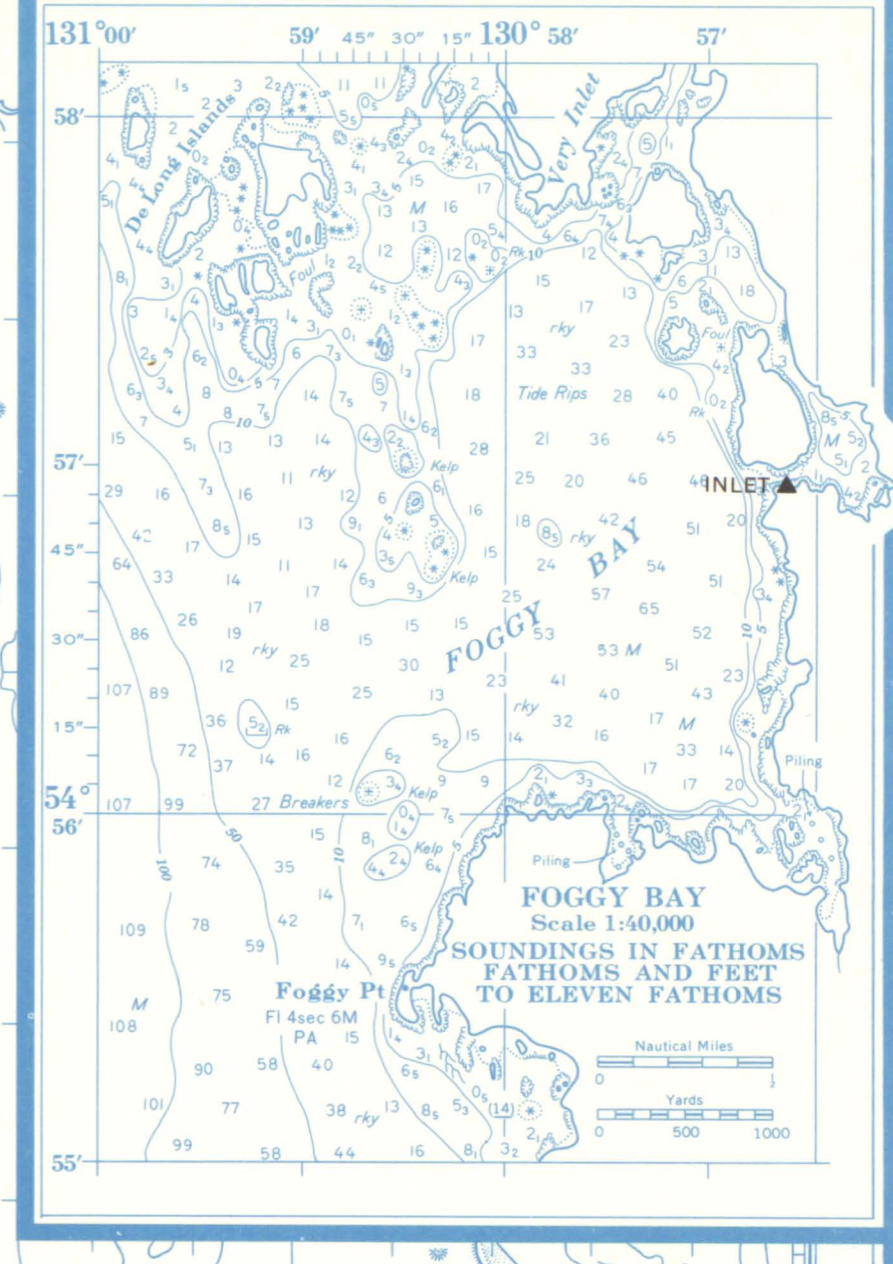
UNITED STATES AND CANADA  
ALASKA—SOUTHEAST COAST  
AND  
BRITISH COLUMBIA

REVILLAGIGEDO CHANNEL

Meridian Projection  
Scale 1:80,000 at Lat. 55°20'  
North American 1927 Datum  
SOUNDINGS IN FATHOMS  
AT MEAN LOWER LOW WATER

PEAK NO. 11

CAUTION  
As many radio stations have been called in this area, it is recommended that you check the frequency of other radio signals as well as marine radio signals. In the U.S. Coast Guard Light List and Distress Calling Manual, under "Emergency Communications," are listed the frequencies of the Coast Guard VHF (A & B) and MF (A & B) stations. These frequencies are subject to change without notice and should be checked with the latest edition of the Light List and Distress Calling Manual. (Approximate location)



1. KETCHIKAN SE. BASE  
2. METAKATLA EAST CHURCH TOWER  
3. METAKATLA WEST CHURCH TOWER  
4. METAKATLA TOWER HALL CUPOLA  
5. SUT  
6. VAN  
7. BUCK  
8. METAKATLA N. BASE  
9. MASTIC ROCK DAYBEACON 1962

HORIZONTAL CONTROL

- ▲ Monumental Point - First Order
- ▲ Monumental Point - Second Order
- ▲ Monumental Point - Third Order
- Located Object - Third Order

The essential data for names of numbered stations

① Station reported not recovered

② Station not seen - Electronic or base

③ Station observed - Line of triangulation observed from one end only

④ Measured Length - Electronic or base

(Not For Navigational Purposes)

Information may be obtained from the  
Director, National Geospatial Intelligence Center  
National Ocean Survey, N.O.S.A., Rockville, Md. 20854

U.S. DEPARTMENT OF COMMERCE  
NATIONAL OCEANIC AND ATMOSPHERIC ADMINISTRATION  
NATIONAL OCEAN SURVEY  
WASHINGTON, D.C.

TRIANGULATION DIAGRAM

October 1978