



TRIANGULATION DIAGRAM 17382
 (FORMERLY TRIANGULATION DIAGRAM 8160)

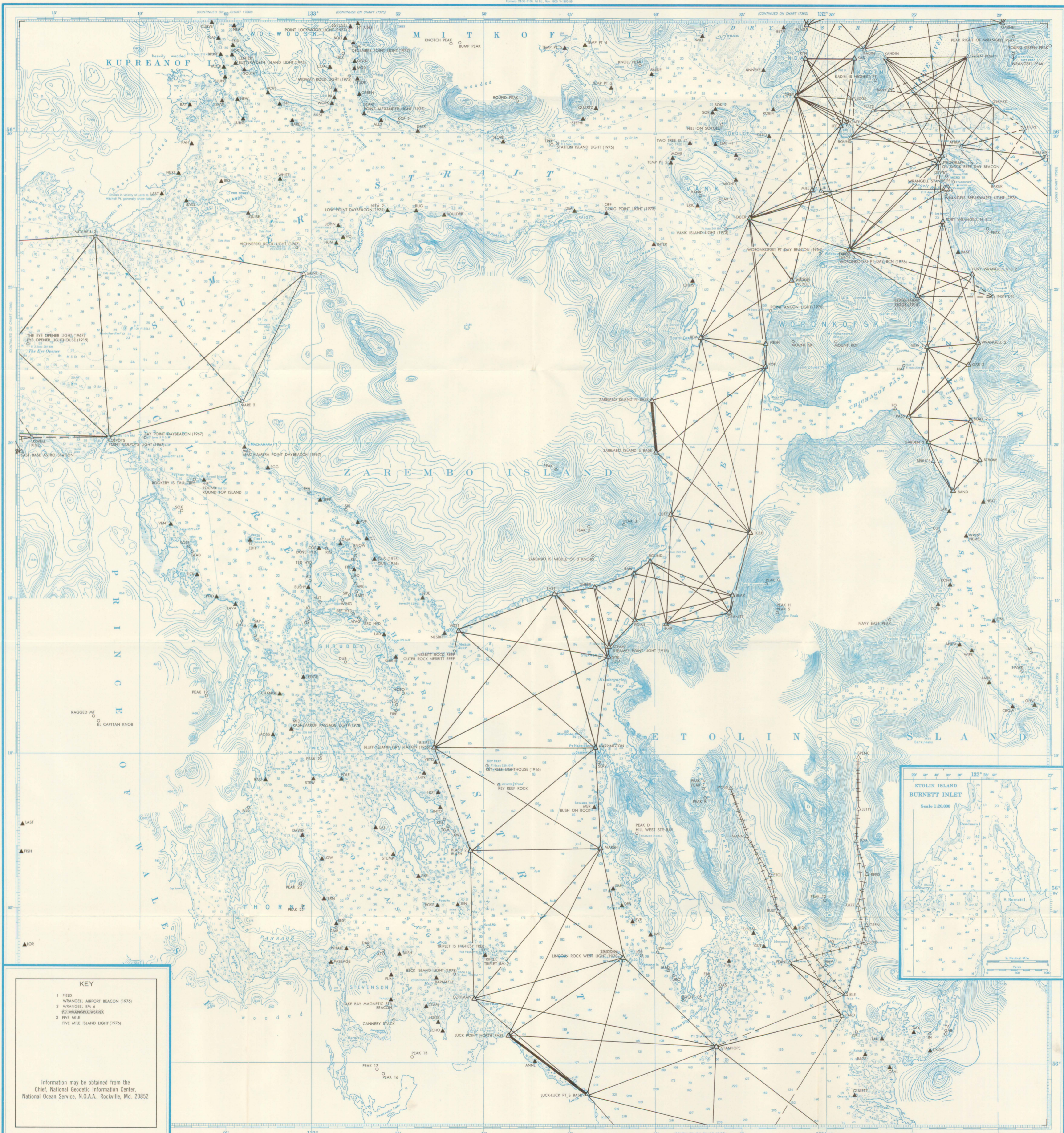
ZAREMBO ISLAND AND APPROACHES

(Not For Navigational Purposes)

Mercator Projection
 Scale 1:80,000 at Lat. 56°13'
 North American 1927 Datum

HORIZONTAL CONTROL

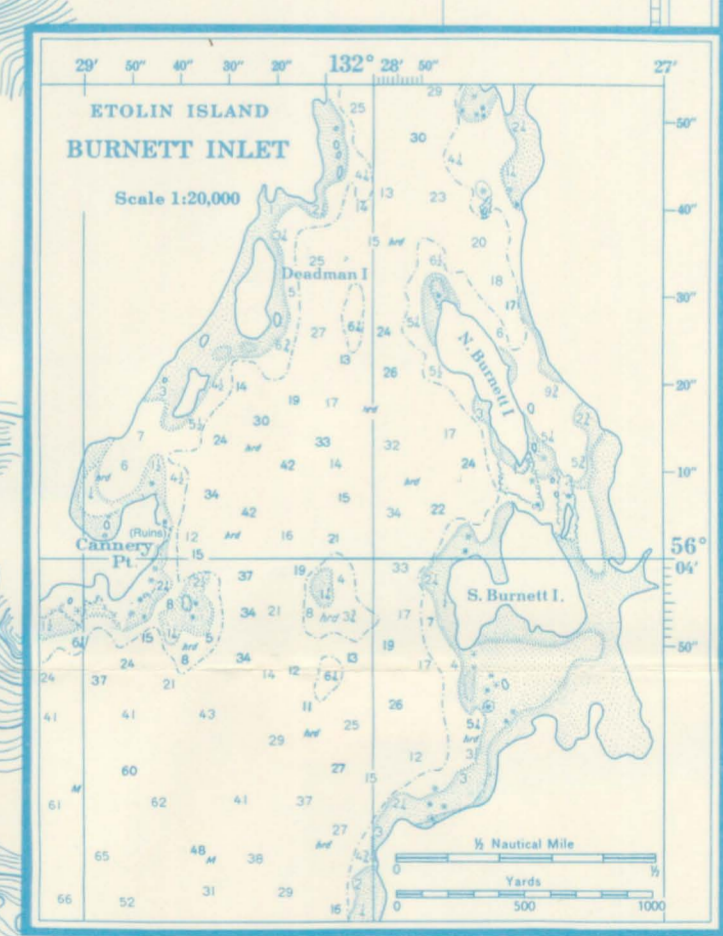
- Astronomic Station
- Satellite Station
- Monumented Point - First Order
- Monumented Point - Second Order
- Monumented Point - Third Order
- Located Object - Third Order
- See separate index for names of numbered stations
- Station reported destroyed
- Measured Base - Electronic or Taped
- Measured Distance - Electronic or Taped
- Line of triangulation observed
- Line of triangulation observed from one end only



KEY

- 1 FIELD
- 2 WRANGELL AIRPORT BEACON (1976)
- 3 WRANGELL Bk 8
- 4 WRANGELL ASTRO
- 5 FIVE MILE
- 6 FIVE MILE ISLAND LIGHT (1976)

Information may be obtained from the
 Chief, National Geodetic Information Center,
 National Ocean Service, N.O.A.A., Rockville, Md. 20852



17382
 FORMERLY 8160
 MAY 1986